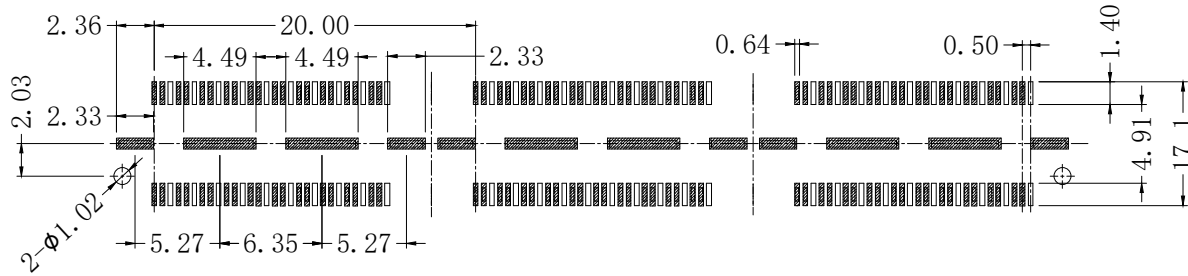
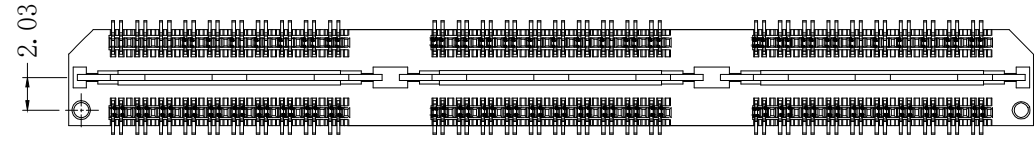
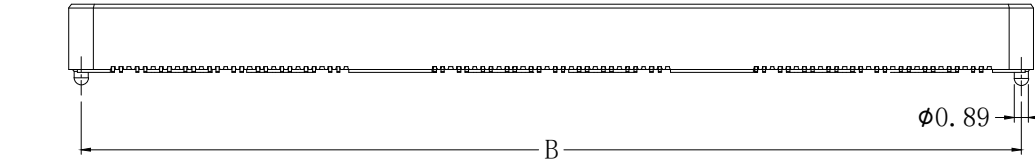
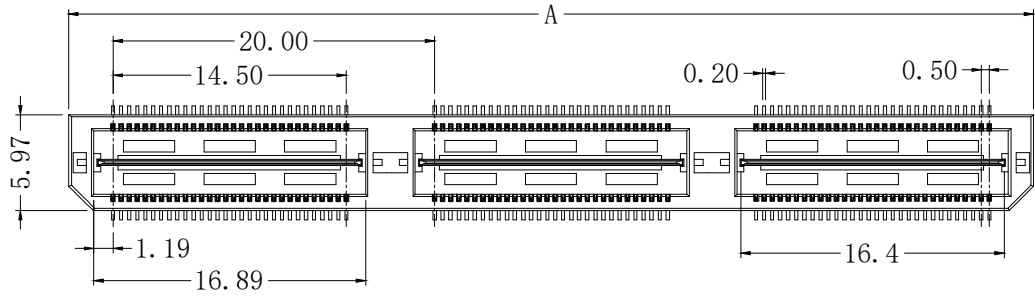
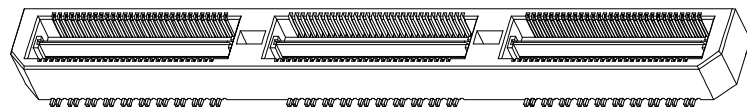


版次	变更内容	审核	日期

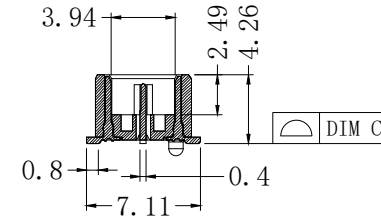


RECOMMEND PCB LAYOUT  
TOLERANCE: ±0.05



产品特性:

1. 绝缘体: LCP, UL 94V-0, 颜色: 黑色
2. 端子: 磷青铜
3. 电镀: 接触区镀金
4. 额定电流: 2 A (2个引脚供电)
5. 工作温度: -55° C TO +125° C
6. 额定电压: 175V AC



SECTION A-A

QTH05-SM-2\*xxP X-DP

单排芯数:                      接触电镀:  
10G: GOLD 10u"  
30G: GOLD 30u"

NO. OF contacts	Dimensions		
	A	B	C
2*20	20.00	18.48	0.10
2*40	40.00	38.48	0.10
2*60	60.00	58.48	0.15
2*80	80.00	78.48	0.15
2*100	100.00	98.48	0.15

公差:	版次:	A	上海宗进电子科技有限公司 Shanghai Zong Jin Electron Technology Co.LTD			
. X ±0.35	比例:		型号: QTH05-SM-2* <u>xx</u> PX-DP	签名	日期	
. XX ±0.25	单位:	mm	描述: 0.5mm BTB 高速接地插座	绘图:		
. XXX	页码:	1/1	图号:	确认:		
LNGLB ±2°				审核:		