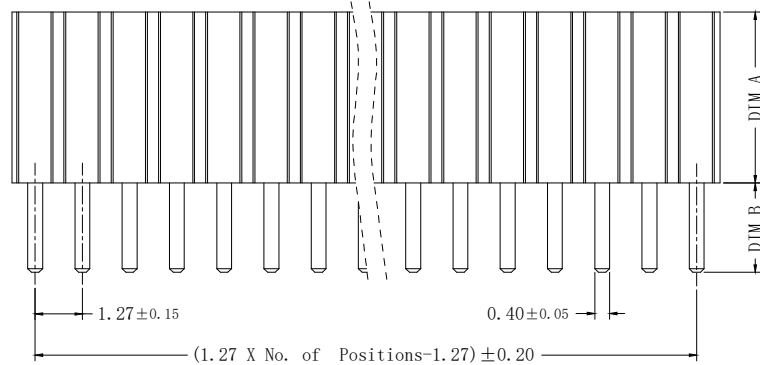
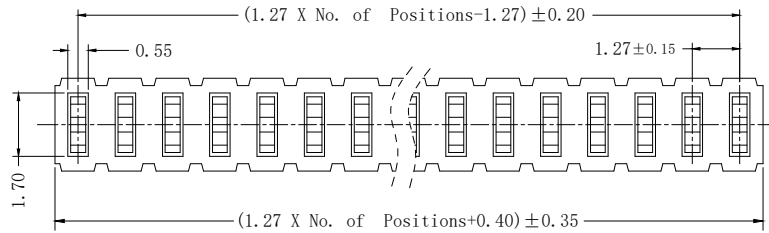


版次	变更内容	审核	日期



弯曲度: 1*02P ~ 1*20P 0.30 MAX.
 1*21P ~ 1*35P 0.40 MAX.
 1*36P ~ 1*50P 0.50 MAX.

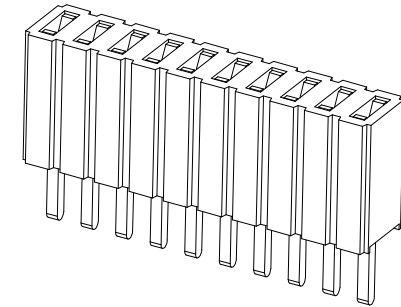
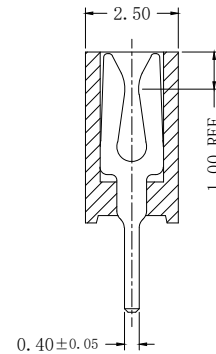
203-1S-Y-1*xxP X-A /B

单排芯数:
01~50

脚长
2.4: 2.40mm

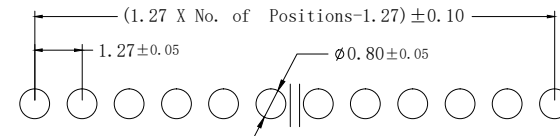
接触电镀:
G: 镀金Gold Flash
1G: 镀金1u"
3G: 镀金3u"
10G: 镀金10u"

塑胶高度
4.6: 4.60mm



技术参数: SPECIFICATIONS

额定电流 (Current Rating): 1A
 绝缘电阻 (Insulation Resistance): 1000Ω Min.
 接触电阻 (Contact Resistance): 20m Ω Max.
 额定电压 (Dielectric Withstanding Voltage): AC 500V
 工作温度 (Operating Temperature): -40°C ~ +105°C
 最大加工温度 (Max Processing Temp): (230°C for 30~60 seconds)
 (260°C for 10 seconds)
 接触材料 (Contact Material): 黄铜(Brass), THICKNESS 0.40mm
 塑胶材料 (Insulator Material): 尼龙(Nylon)-9T, UL 94V-0, 颜色:黑色
 接触电镀 (Contact Plating): 镀金 (Gold plated)



Recommended PCB Layout

公差:	版次:	A	上海宗进电子科技有限公司 Shanghai Zong Jin Electron Technology Co.LTD		
	比例:				
. X ±0.35	单位:	mm	型号:	203-1S-Y-1*xxPX-A/B	签名 日期
. XX ±0.25	页码:	1/1	描述:	1.27单排Y端直脚排母	
. XXX ±2° LNLB	图号:		图号:		